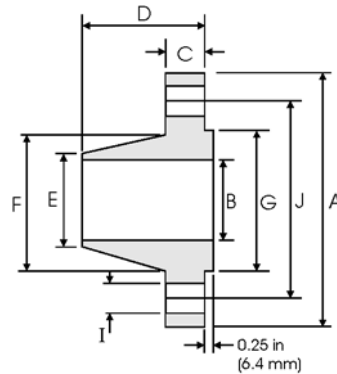




# Weld Neck Flanges - ANSI B16.5



## Class 400 lb

| Pipe              |   | Flange Data      |                              |                      |                | Hub Data               |              | Raised Face   | Drilling Data   |                    |                             | Weight  |
|-------------------|---|------------------|------------------------------|----------------------|----------------|------------------------|--------------|---------------|-----------------|--------------------|-----------------------------|---|
| Nominal Pipe Size |  | A                | B                            | C                    | D              | E                      | F            | G             | H               | I                  | J                           |  |
|                   | Outside Diameter  | Overall Diameter | Inside Diameter              | Flange Thickness min | Overall Length | Diameter at Weld Bevel | Hub Diameter | Face Diameter | Number of Holes | Bolt Hole Diameter | Diameter of Circle of Holes | kg/ piece   |
|                   | in  | in               | in                           | in                   | in             | in                     | in           | in            |                 | in                 | in                          |   |
| 1/2               | 0.840   | 3.750            | To be specified by Purchaser | 0.560                | 2.060          | 0.840                  | 1.500        | 1.380         | 4               | 0.620              | 2.620                       | 0.87  |
|                   | 21.30   | 95.30            |                              | 14.20                | 52.30          | 21.30                  | 38.10        | 35.00         |                 | 15.70              | 66.55                       |   |
| 3/4               | 1.050   | 4.620            |                              | 0.620                | 2.250          | 1.050                  | 1.880        | 1.690         | 4               | 0.750              | 3.250                       | 1.45  |
|                   | 26.70   | 117.3            |                              | 15.70                | 57.15          | 26.70                  | 47.80        | 42.90         |                 | 19.10              | 82.60                       |   |
| 1                 | 1.315   | 4.880            |                              | 0.690                | 2.440          | 1.320                  | 2.120        | 2.000         | 4               | 0.750              | 3.500                       | 1.76  |
|                   | 33.40   | 124.0            |                              | 17.50                | 62.00          | 33.50                  | 53.80        | 50.80         |                 | 19.10              | 88.90                       |   |
| 1 1/4             | 1.660   | 5.250            |                              | 0.810                | 2.620          | 1.660                  | 2.500        | 2.500         | 4               | 0.750              | 3.880                       | 2.49  |
|                   | 42.20   | 133.4            |                              | 20.60                | 66.55          | 42.20                  | 63.50        | 63.50         |                 | 19.10              | 98.60                       |   |
| 1 1/2             | 1.900   | 6.120            |                              | 0.880                | 2.750          | 1.900                  | 2.750        | 2.880         | 4               | 0.880              | 4.500                       | 3.49  |
|                   | 48.30   | 155.4            |                              | 22.40                | 69.85          | 48.30                  | 69.85        | 73.15         |                 | 22.40              | 114.3                       |   |
| 2                 | 2.375   | 6.500            |                              | 1.000                | 2.880          | 2.380                  | 3.310        | 3.620         | 8               | 0.750              | 5.000                       | 4.36  |
|                   | 60.30   | 165.1            |                              | 25.40                | 73.15          | 60.45                  | 84.10        | 91.90         |                 | 19.10              | 127.0                       |   |
| 2 1/2             | 2.875   | 7.500            |                              | 1.120                | 3.120          | 2.880                  | 3.940        | 4.120         | 8               | 0.880              | 5.880                       | 6.43  |
|                   | 73.00   | 190.5            |                              | 28.40                | 79.25          | 73.15                  | 100.1        | 104.6         |                 | 22.40              | 149.4                       |   |
| 3                 | 3.500   | 8.250            |                              | 1.250                | 3.250          | 3.500                  | 4.620        | 5.000         | 8               | 0.880              | 6.620                       | 8.53  |
|                   | 88.90   | 209.6            |                              | 31.75                | 82.60          | 88.90                  | 117.3        | 127.0         |                 | 22.40              | 168.1                       |   |
| 3 1/2             | 4.000   | 9.000            |                              | 1.380                | 3.380          | 4.000                  | 5.250        | 5.500         | 8               | 1.000              | 7.250                       | 10.7  |
|                   | 101.6   | 228.6            |                              | 35.10                | 85.90          | 101.6                  | 133.4        | 139.7         |                 | 25.40              | 184.2                       |   |
| 4                 | 4.500   | 10.00            |                              | 1.380                | 3.500          | 4.500                  | 5.750        | 6.190         | 8               | 1.000              | 7.880                       | 12.8  |
|                   | 114.3   | 254.0            |                              | 35.10                | 88.90          | 114.3                  | 146.1        | 157.2         |                 | 25.40              | 200.2                       |   |
| 5                 | 5.563   | 11.00            | 1.500                        | 4.000                | 5.560          | 7.000                  | 7.310        | 8             | 1.000           | 9.250              | 16.9                        |   |
|                   | 141.3   | 279.4            | 38.10                        | 101.6                | 141.2          | 177.8                  | 185.7        |               | 25.40           | 235.0              |                             |   |
| 6                 | 6.625   | 12.50            | 1.620                        | 4.060                | 6.630          | 8.120                  | 8.500        | 12            | 1.000           | 10.62              | 22.0                        |   |
|                   | 168.3   | 317.5            | 41.10                        | 103.1                | 168.4          | 206.2                  | 215.9        |               | 25.40           | 269.7              |                             |   |
| 8                 | 8.625   | 15.00            | 1.880                        | 4.620                | 8.630          | 10.25                  | 10.62        | 12            | 1.120           | 13.00              | 34.7                        |   |
|                   | 219.1   | 381.0            | 47.80                        | 117.3                | 219.2          | 260.4                  | 269.7        |               | 28.40           | 330.2              |                             |   |
| 10                | 10.75   | 17.50            | 2.120                        | 4.880                | 10.75          | 12.62                  | 12.75        | 16            | 1.250           | 15.25              | 48.5                        |   |
|                   | 273.0   | 444.5            | 53.80                        | 124.0                | 273.0          | 320.5                  | 323.8        |               | 31.75           | 387.4              |                             |   |
| 12                | 12.75   | 20.50            | 2.250                        | 5.380                | 12.75          | 14.75                  | 15.00        | 16            | 1.380           | 17.75              | 69.6                        |   |
|                   | 323.8   | 520.7            | 57.15                        | 136.7                | 323.8          | 374.7                  | 381.0        |               | 35.10           | 450.9              |                             |   |
| 14                | 14.00   | 23.00            | 2.380                        | 5.880                | 14.00          | 16.75                  | 16.25        | 20            | 1.380           | 20.25              | 95.5                        |   |
|                   | 355.6   | 584.2            | 60.45                        | 149.4                | 355.6          | 425.5                  | 412.7        |               | 35.10           | 514.4              |                             |   |
| 16                | 16.00   | 25.50            | 2.500                        | 6.000                | 16.00          | 19.00                  | 18.50        | 20            | 1.500           | 22.50              | 118                         |   |
|                   | 406.4   | 647.7            | 63.50                        | 152.4                | 406.4          | 482.6                  | 469.9        |               | 38.10           | 571.5              |                             |   |
| 18                | 18.00   | 28.00            | 2.620                        | 6.500                | 18.00          | 21.00                  | 21.00        | 24            | 1.500           | 24.75              | 145                         |   |
|                   | 457.2   | 711.2            | 66.55                        | 165.1                | 457.2          | 533.4                  | 533.4        |               | 38.10           | 628.7              |                             |   |
| 20                | 20.00   | 30.50            | 2.750                        | 6.620                | 20.00          | 23.12                  | 23.00        | 24            | 1.620           | 27.00              | 173                         |   |
|                   | 508.0   | 774.7            | 69.85                        | 168.1                | 508.0          | 587.2                  | 584.2        |               | 41.10           | 685.8              |                             |   |
| 24                | 24.00   | 36.00            | 3.000                        | 6.880                | 24.00          | 27.62                  | 27.25        | 24            | 1.880           | 32.00              | 249                         |   |
|                   | 609.6   | 914.4            | 76.20                        | 174.8                | 609.6          | 701.5                  | 692.1        |               | 47.80           | 812.8              |                             |   |

### Notes

- Dimension B corresponds to the pipe inside diameter. Values quoted assume 40S/Standard wall thickness.
- Weights are based on manufacturer's data and are approximate.
- For ring joint facings see page 8-6. For weld end bevel see page 8-5.
- For tolerances see page 8-4.